

# Identify Proportional Relationships: Graphs

## Conceptual Lesson

Grade 7 • Unit 3 • Lesson 7

MC: 7.RP.2a▲

MPs

✓ Applied MP  
\* Embedded MP

| 1  | 2 | 3 | 4 | 5 | 6 | 7 | 8 |
|----|---|---|---|---|---|---|---|
| ✓* |   |   |   |   |   | ✓ | * |

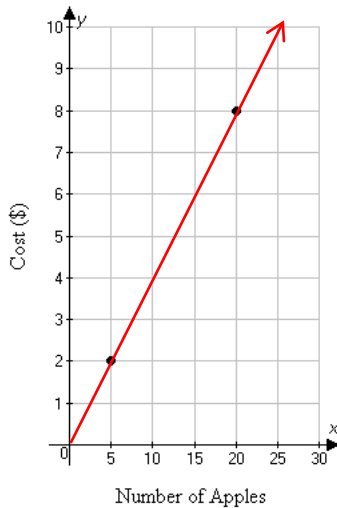
## Problem of the Day

Objective: \_\_\_\_\_

### Vocabulary

**Proportional Relationship:** is a relationship between two equal ratios

| Apples | Cost (\$) |
|--------|-----------|
| 5      | 2         |
| 20     | 8         |



\*The graph of a proportional relationship is a straight line that passes through the origin (0,0).

### Notes

#### Steps:

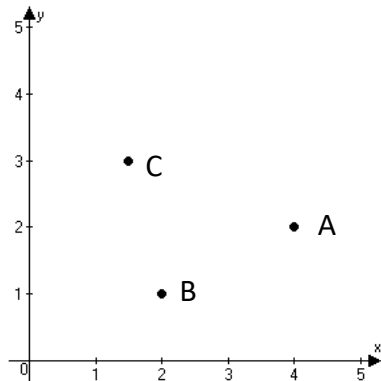
1. Draw a line connecting the points.
2. If the line goes through the origin, the relationship is proportional.

# Structured Guided Practice

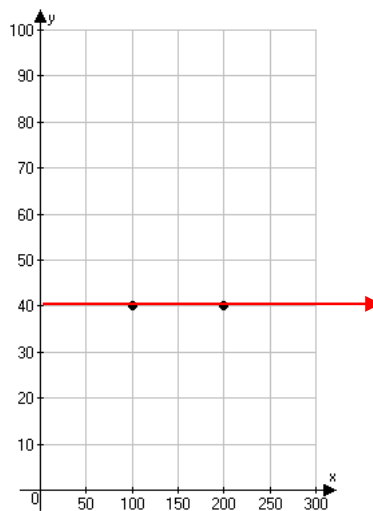
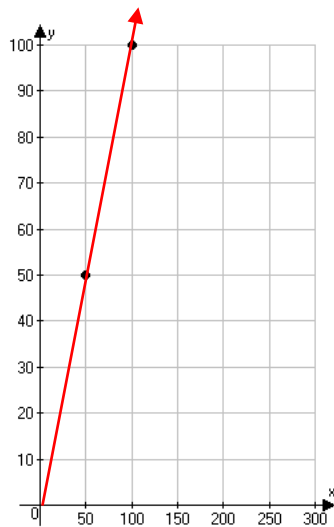
(A/B Partners Practice)

**Directions:** Read and answer.

1. Determine which points in the graph, if any, represent proportional relationships.



2. Which graph shows a proportional relationship?

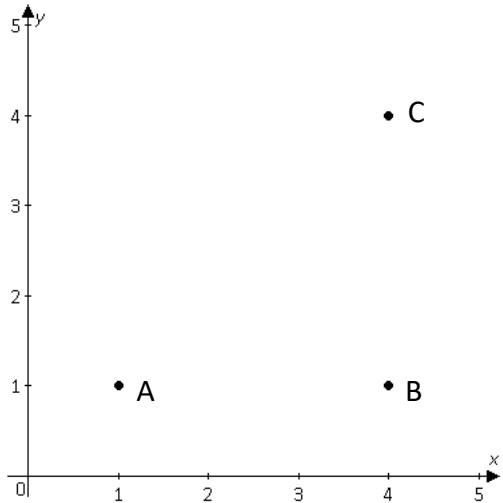


# Final Check for Understanding

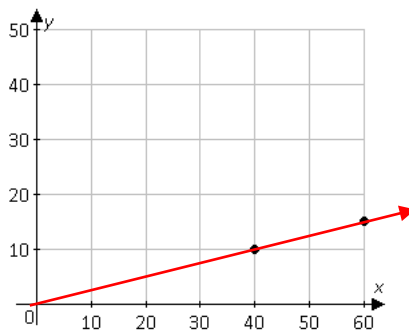
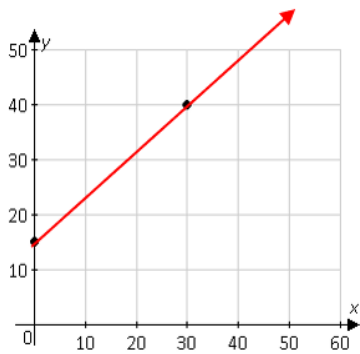
(Teacher Checks Work)

**Directions:** Read and answer.

1. Determine which points in the graph, if any, represent proportional relationship.



2. Which graph shows a proportional relationship?



# Closure

## Closure

Recap today's lesson with one or more of the following questions:

✓**MP1:** *How would you describe what you are trying to find?*

✓**MP7:** *What do you notice when the graph is proportional?*