

# Homework

## Unit 3 · Lesson 7: Identify Proportional Relationships: Graphs

Name: \_\_\_\_\_

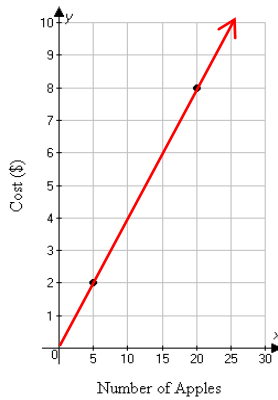
Date: \_\_\_\_\_

**Objective:** I will use a graph to determine a proportional relationship.

### Vocabulary

**Proportional Relationship:** is a relationship between two equal ratios

Apples	Cost (\$)
5	2
20	8



\*The graph of a proportional relationship is a line that passes through the origin (0,0).

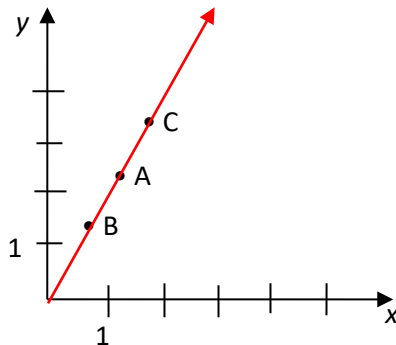
### Steps:

1. Draw a line connecting the points.
2. If the line goes through the origin (0,0), the relationship is proportional.

### Example

**Directions:** Use the given graph to answer the following.

Determine whether the graph represents a proportional relationship. Why is it helpful to use a graph?



### Solution:

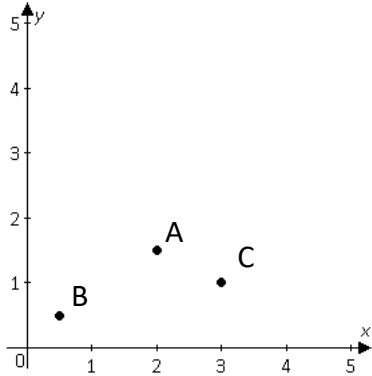
- Draw a straight line to connect all three given points and extend the line to see if it crosses at the origin.
- Yes, the graph does represent a proportional relationship because the line created by connecting all given points crosses the origin.
- It is helpful to use a graph because if a straight line can be drawn through all given points and it crosses the origin, you can see that the given data is proportional.

# Homework

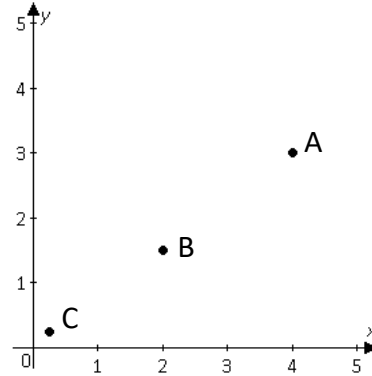
## Unit 3 · Lesson 7: Identify Proportional Relationships: Graphs

**Directions:** Determine which points in the graph, if any, represent proportional relationships.

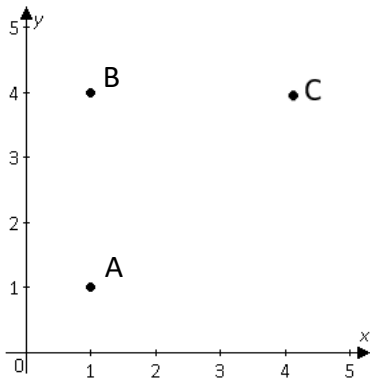
1.



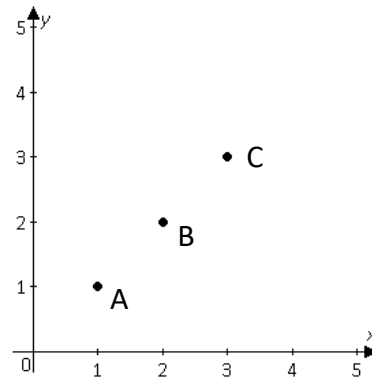
2.



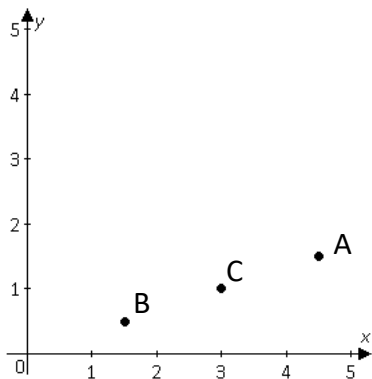
3.



4.



5.



6.

